

4TECT

ООО «4TECT»

Телефон: +7 (499) 685-4444

info@4test.ru

www.4test.ru

DE

Diamond Engineering

Desktop Antenna
Measurement Systems
and Accessories



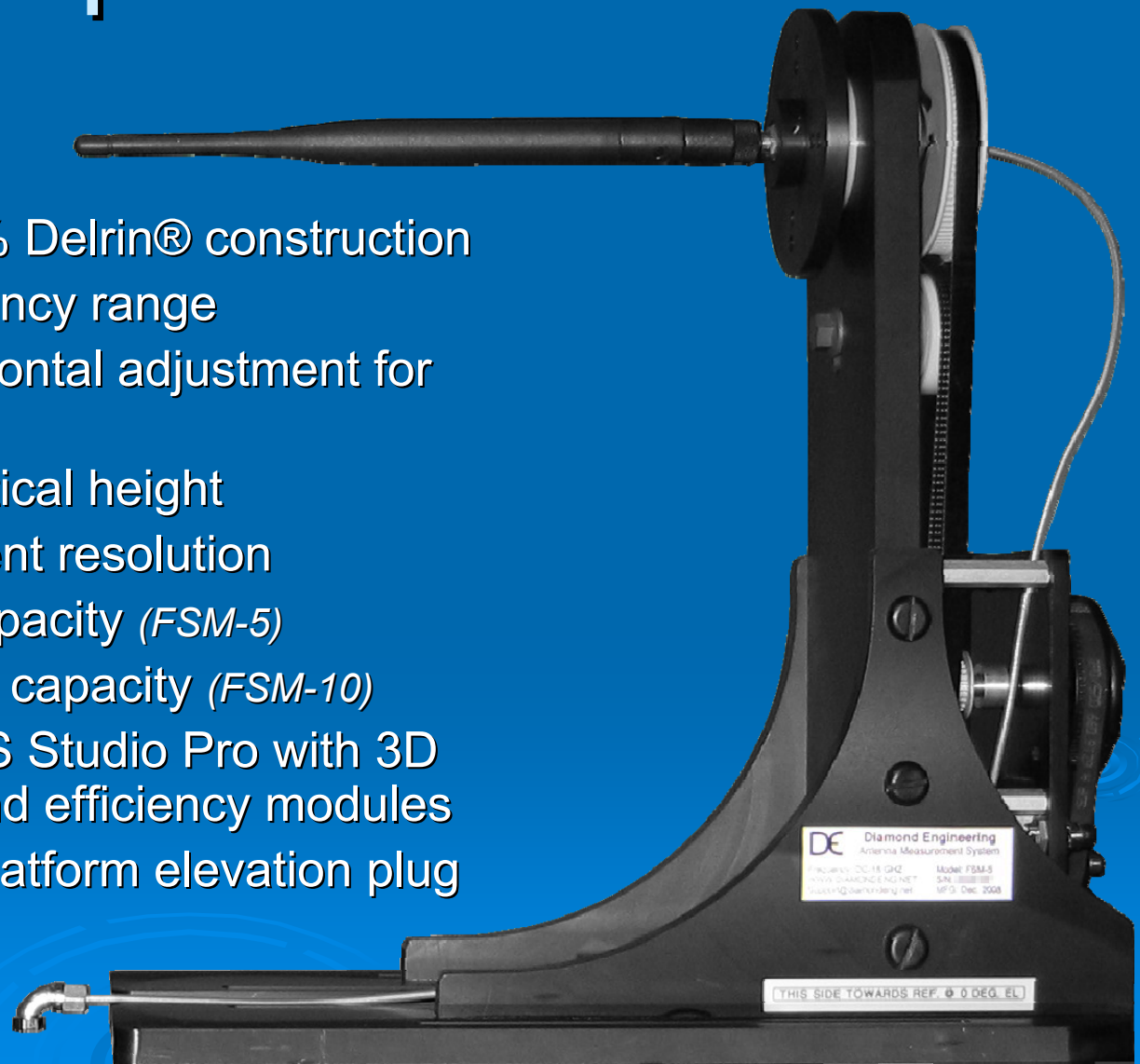
DAMS 6000 Series



- DC to 18GHz frequency range
- Ultra-precision, low-noise rotary joint with SMA connectors
- Up to $.0625^\circ$ azimuth resolution
- 360° continuous azimuth range
- $\pm 45^\circ$ elevation range at 10° per step
- Precision vertical hybrid linear actuator
- 20 lbs. (9 kg) payload capacity
- USB platform control interface
- 85% acrylic and Delrin® construction for limited reflection
- 120° per minute vertical movement
30 R.P.M. maximum azimuth movement
- Includes Antenna Studio Pro measurement software
- Also includes alignment tools, advanced processing modules, 3 year warranty and more!

FSM-5 Spherical Mount

- Low reflection - 90% Delrin® construction
- DC - 18 GHz frequency range
- 6 inch (15 cm) horizontal adjustment for centering
- 12 inch (30 cm) vertical height
- 0.1 degree movement resolution
- 5 lbs. (2 kg) load capacity (*FSM-5*)
- 10 lbs. (4.5 kg) load capacity (*FSM-10*)
- Supported by DAMS Studio Pro with 3D spherical plotting and efficiency modules
- Runs from DAMS platform elevation plug



DAMS 6100 Series



- DC to 18GHz frequency range
- 250 lbs. (113 kg) payload capacity
- Ultra-precision, low-noise rotary joint with female SMA/K connector and ultra-high quality cable with SMA/K connectors
- Up to $.01^\circ$ azimuth resolution with 360° azimuth rotation and encoded position feedback
- Ultra-high torque stepper drive system
- $\pm 90^\circ$ elevation range at 0.1° per step
- Heavy-duty steel gear drive-train
- Steel gear and worm with ball and tapered roller bearings
- USB/RS-232 serial/ethernet platform control interface
- Ultra-high resolution options
- 85% acrylic and Delrin® construction for limited reflection
- 120° per minute vertical movement
- 30 R.P.M. maximum azimuth movement
- Includes Antenna Studio Pro measurement software
- Also includes heavy-duty tripod, alignment tools, $\pm 90^\circ$ pivot for spherical measurements, advanced processing modules, 3 year warranty and more!

All Systems Include



- Positioner
- Controller
- Tripod
- Diamond Engineering's Antenna Studio measurement software
- All necessary cables
- All necessary tools/hardware
- Documentation for use and setup
- Warranty of 1-3 years
- Technical support

Instrument Compatibility

VECTOR NETWORK ANALYZERS

HP / Agilent 8510x Series
HP / Agilent 8714 Series
HP / Agilent 8720 Series
HP / Agilent 8753 Series
Agilent 507x Series
Agilent PNA Series
Anritsu VNA Master
Anritsu 46xx Series Analyzers (Scorpion)
Anritsu 37xx Series Analyzers (Lightning)
Rohde & Schwarz ZVx Series

SIGNAL GENERATORS

Most HP hardware
SMP Series

POWER METERS

Elva DPM-10
HP436A
HP437B
Anritsu ML2438A

SPECTRUM ANALYZERS

HP8565 Series
Rohde & Schwarz FSL Series
Anritsu MS27xx Series
Anritsu MT82xx Series

Anritsu



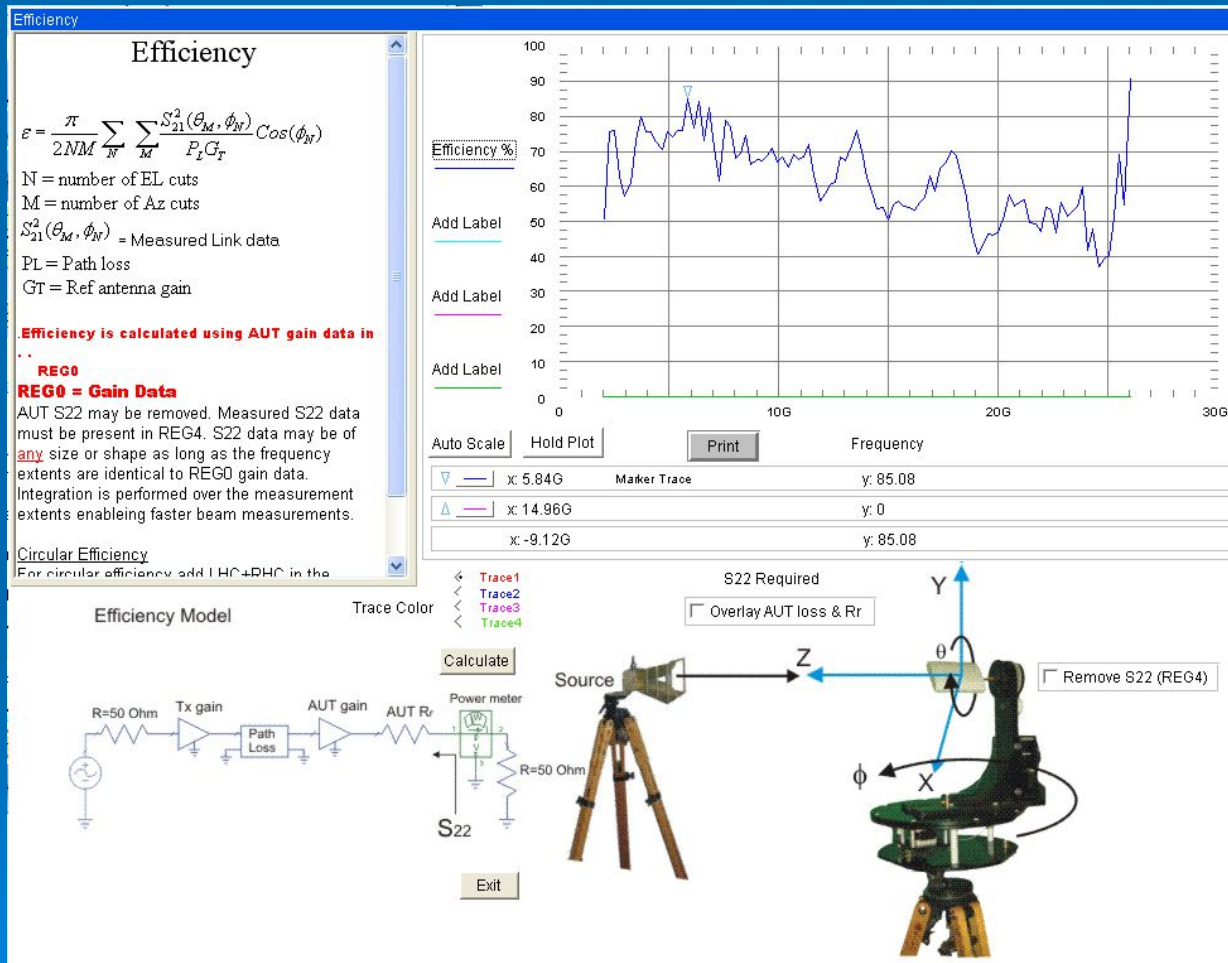
Agilent Technologies



ADVANTEST

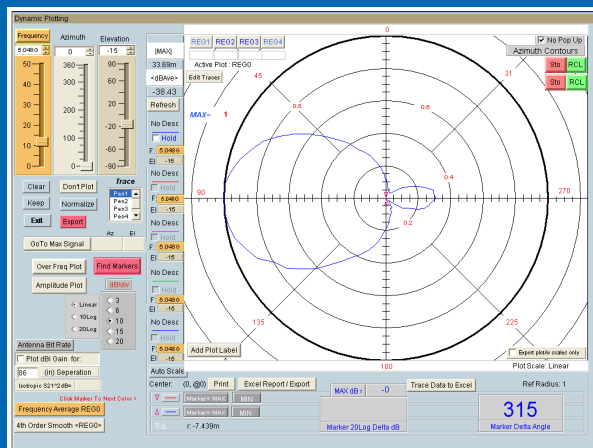


Efficiency Measurements

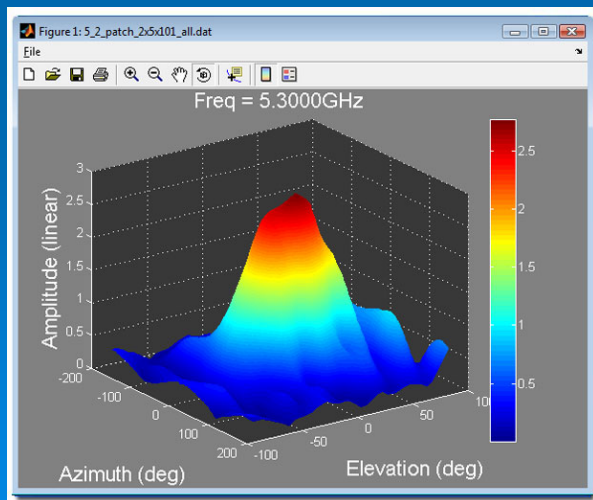


- Quickly generate AUT efficiency measurements
- Examine up to four different measurements simultaneously

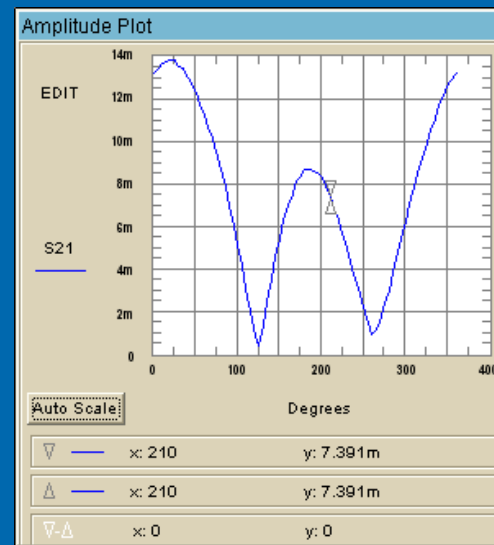
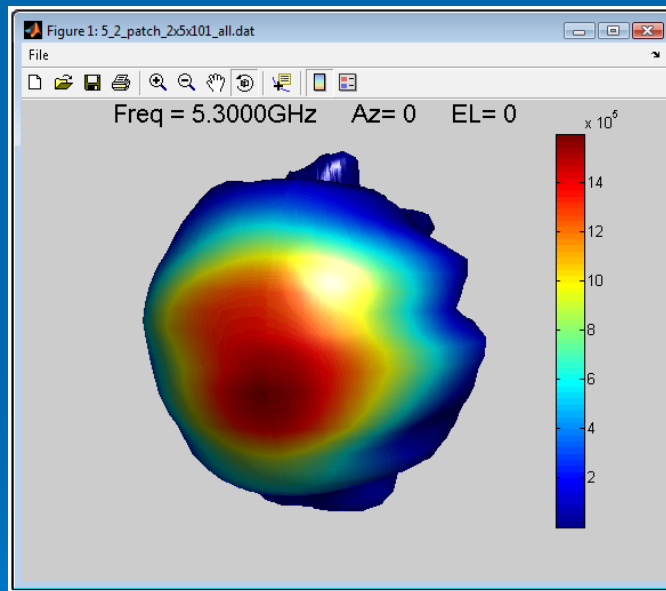
2D and 3D Plotting Options



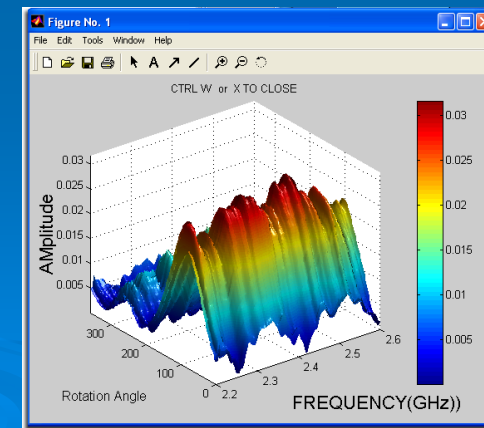
Polar Plot



3D AZ-EL Plot



Amplitude Plot



3D Freq/Amplitude Plot

Data Import/Export

C:\DAMS\AdvancedExport\testexport.txt

Azimuth	Elevation	854000000	860000000
0	-45	0.0073389955	56.00155
5	-45	0.0066556963	38.083739
10	-45	0.0063229896	39.090269
15	-45	0.0056502828	37.393564
20	-45	0.0058736247	39.32346
25	-45	0.0056197749	39.32101
30	-45	0.0053924567	39.168881
35	-45	0.0051994658	39.407125
40	-45	0.0050164525	38.297067
45	-45	0.0047651581	36.329346
50	-45	0.0044033717	35.654601
55	-45	0.0040289231	33.845266
60	-45	0.003853513	30.926909
65	-45	0.0036035837	26.292688

Plain Text (ASCII)

testexport.txt

	A	B	C	D	E	F	G	H	I	J	K	L	M	N	O
1	Azimuth	Elevation	8.54E+08		8.6E+08		8.66E+08		8.72E+08		8.78E+08		8.84E+08		8.9E+08
2	0	-45	0.007339	56.00155	0.007593	-46.1041	0.006929	-143.358	0.006749	129.4986	0.007748	40.41213	0.009109	-53.9315	0.010393
3	5	-45	0.006656	38.08374	0.006736	-64.3589	0.005624	-163.868	0.004947	115.6173	0.006215	32.70906	0.007523	-62.2365	0.008727
4	10	-45	0.006323	39.09027	0.006154	-62.5311	0.00525	-158.609	0.004892	122.3427	0.006338	37.30346	0.007641	-58.8741	0.008913
5	15	-45	0.00565	37.39356	0.005504	-62.3499	0.004597	-155.447	0.004538	127.7777	0.006189	40.85088	0.007455	-56.3237	0.008658
6	20	-45	0.005874	39.32346	0.005762	-61.985	0.004813	-158.468	0.004525	125.5857	0.005961	39.78112	0.007245	-55.6459	0.008543
7	25	-45	0.00562	39.32101	0.005551	-61.7661	0.004621	-158.996	0.004231	126.2276	0.005782	41.99935	0.006984	-54.266	0.008297
8	30	-45	0.005392	39.16888	0.004924	-60.2073	0.004465	-159.616	0.003943	125.6671	0.005306	43.07865	0.006688	-53.0356	0.007945
9	35	-45	0.005199	39.40713	0.005111	-62.1847	0.004198	-159.593	0.003628	126.3697	0.005105	44.35955	0.00636	-51.4501	0.007661
10	40	-45	0.005016	38.29707	0.004891	-64.3158	0.003845	-161.7	0.00336	126.1821	0.004705	45.89377	0.005981	-49.6135	0.007213
11	45	-45	0.004765	36.32935	0.004633	-66.4826	0.003674	-164.155	0.002966	125.6513	0.004387	47.48266	0.005615	-48.6861	0.006793
12	50	-45	0.004403	35.6546	0.004335	-66.7335	0.003356	-167.158	0.002556	125.0053	0.003944	49.95079	0.005146	-46.7391	0.006339
13	55	-45	0.004029	33.84527	0.004053	-69.7183	0.003128	-170.157	0.00219	122.7735	0.003503	51.89093	0.00476	-45.0396	0.005946
14	60	-45	0.003854	30.92691	0.003765	-73.0473	0.00288	-176.062	0.001741	119.9528	0.003145	52.8598	0.004247	-43.0754	0.005423
15	65	-45	0.003604	26.29269	0.003522	-77.1652	0.002594	178.8517	0.00136	116.2999	0.002681	55.51167	0.003826	-41.0469	0.004885
16	70	-45	0.003392	22.30606	0.003298	-83.8062	0.002459	169.1898	0.001057	103.8079	0.00229	58.20725	0.003434	-38.97	0.00443

Excel

4TECT

ООО «4TECT»

Телефон: +7 (499) 685-4444

info@4test.ru

www.4test.ru

Current Customers

